



Registry of Interpreters for the Deaf


[How to Become an Interpreter](#)

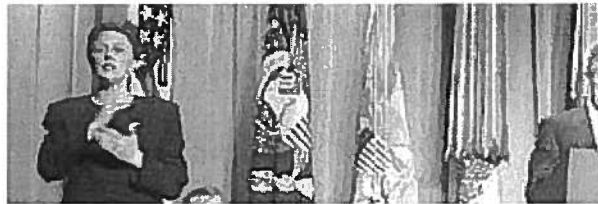
[Online Store](#)

[FAQs](#)

[Contact RID](#)
[Membership](#)
[Testing System](#)
[CMP/ACET](#)
[Publications](#)
[About RID](#)
[Searchable Databases](#)


Searchable Databases

- ▶ [Find a Member](#)
- ▶ [Find an Interpreter](#)
- ▶ [Find a Workshop](#)
- ▶ [Find a Presenter](#)
- ▶ [Find a CMP/ACET Sponsor](#)
- ▶ [Review Your CMP/ACET Transcript](#)
- ▶ [Find Interpreter Training Programs](#)



Who We Are

The Registry of Interpreters for the Deaf, Inc., (RID) is a national membership organization of professionals who provide sign language interpreting/transliterating services for Deaf and Hard of Hearing persons. Established in 1964 and incorporated in 1972, RID is a tax-exempt 501(c)(3) non-profit organization.

RID advocates for the increased quality, qualifications, and quantity of interpreters through our three main triad of services:

- Professional Certification through our [National Testing System](#) (NTS)
- Professional development through our [Certification Maintenance Program](#) (CMP) and [Associate Continuing Education Tracking](#) (ACET)
- Promoting our [Code of Ethics](#) through our [Ethical Practices System](#) (EPS).

More [about](#) RID.

In the Spotlight

▶ **RID Seeking Comment on the Latest Draft of the Video Relay Service (VRS) Standard Practice Paper (SPP).
Deadline for comment: May 4, 2007.**

To add your comments, [click here](#).

▶ **New 2007 RID National Conference Hotel Information**

RID has negotiated a group rate of \$165 for single/double rooms at a hotel very near the San Francisco Marriott since the room block at the Marriott has sold out. More information for the San

Site Index

Membersh

- [Join RID](#)
- [Online Membership Renewal](#)
- [Membership](#)

National Testing Systems

- [NAD-RID National Interpreter Certification \(NIC\)](#)
- [RID Certification](#)

Certification Maintenance Program

- [About the CMP](#)
- [About ACET](#)
- [CMP/ACET](#)

Ethical Practices System

- [Code of Professional Conduct](#)
- [About the Ethical Practices System \(Complaints\)](#)
- [Responding to Subpoenas](#)

Products and Publications

- [How to Place an Order](#)
- [Journal of Interpreting](#)
- [RID Press/Papers](#)
- [VIEWS Newsletter](#)

General Information

- [About RID](#)
- [Affiliate Chapters](#)
- [Becoming a Member](#)


[Hiring/Working With an Interpreter](#)

[Interpreting Standards](#)

[Conferences](#)

[Search the RID Web Site](#)

[RID Web Bulletin Board](#)

Francisco Parc 55 property can be found at [2007 Conference](#).

To reserve rooms at this hotel online, go to
<http://72.3.238.48:8080/RezTripWeb/specialPromo.do?id=code1%3D9388314%26code2%3D1187631>

►EIPA Special Membership Application Available Now

Interpreters who have passed the EIPA written test and scored at least a 4.0 on the EIPA performance test may now join RID as certified members and maintain certification through the RID Certification Maintenance Program (CMP) and Ethical Practices System (EPS). New and current members of RID who wish to do so must [use this membership application](#) or call the RID national office at 703/838-0030.

►Information on the Inclusion of EIPA Certified Interpreters into the RID CMP and EPS

The RID Board of Directors passed a motion that will recognize individuals who have passed the Educational Interpreter Performance Assessment (EIPA) written and performance tests at the level of 4.0 or higher as certified members of RID. In conjunction with this action, RID has also appointed the first members of the Educational Interpreting Committee to address a number of issues related to this initiative as well as a host of issues related to educational interpreting that need to be addressed by the association. Detailed information related to this decision as well as how it will be implemented can be found below:

[Informational Resource Guide](#) 


[Press Release](#) 

[FAQs](#) 

[History](#) 

[Rationale](#) 

[Timeline](#) 

[Articles in VIEWS related to EIPA](#) 

[Goals of the EIPA-RID Agreement](#) 

[Board Approved Motion](#) 

[Educational Interpreting Committee](#) 

[Current RID certified member count](#) 

[Link to EIPA website](#) 

- [Board of Dir](#)
- [Bulletin Boa](#)
- [Bylaws](#)
- [Code of Pro Conduct](#)
- [Committees](#)
- [2007 Confer](#)
- [Educational](#)
- [Ethical Prac System \(Com](#)
- [FAQs](#)
- [Fax-On-Den](#)
- [Fund Raisin](#)
- [Hiring/Worki](#)
- [Interpreters](#)
- [Interpreting](#)
- [FAQ](#)
- [Interpreter T Programs](#)
- [Links](#)
- [Media/Press](#)
- [Mentoring G Program](#)
- [Model Legis](#)
- [National Co Interpreting](#)
- [National Off](#)
- [Reinstatem](#)
- [Research G Program](#)
- [Scholarship Awards](#)
- [Search the f Site](#)
- [Searchable](#)
- [Special Intel](#)
- [Standard Pr Papers](#)
- [State Licens](#)
- [Structure of](#)

For individuals who have passed the EIPA Performance Test at 4.0 or higher but have not yet passed the EIPA Written Test because it was not offered at the time of testing, please contact Mary Ella Patterson of Boys Town. Her contact information can be found at <http://classroominterpreting.org/Contact/index.asp>.

► Nominations Form for RID Board of Directors

It is time for nominations for officers on the RID Board of Directors. Information on the duties of the positions can be found on the nominations form. Information on who has already announced for the positions is in the January issue of VIEWS. The deadline for nominations to be postmarked is April 1.

[Nominations Form](#) 

► Information on the Inclusion of ACCI Certified Interpreters into the RID CMP and EPS

ACCI certified interpreters may now join RID as Certified members and maintain certification through the RID Certification Maintenance Program (CMP) and Ethical Practices System (EPS). New and current members of RID who wish to maintain their ACCI certification through RID must use this [membership application](#) or call the RID national office at 703/838-0030.



[Copyright Information](#) | [Webmaster](#) | [Contact RID](#) | [Home Page](#) |

© Copyright Registry of Interpreters for the Deaf, Inc.



This site makes extensive use of PDF files. Please download the free PDF file reader



RID Searchable Databases

- ▶ Go to the [Interpreter/RID Member database](#)
- ▶ Go to the [Interpreter Agency/Referral Service database](#)
- ▶ Go to the [Interpreter Workshop database](#)
- ▶ Go to the [Interpreter Training Program database](#)
- ▶ Go to the [CMP/ACET Sponsor database](#)
- ▶ Go to the [CMP/ACET Transcript database](#)



[Search for an Interpreter/RID Member](#)

Welcome to RID's online Membership Directories. From here you can search our database for interpreters by name, certification status, city, state, zip code, country, or area code.

Note that the state should be in the form of the two-letter postal abbreviation. The first three digits of the zip code can be used with the state abbreviation to expand a zip code search or narrow a state search.

The results of your search will be returned as a list. From this list, you can click on a name to view details on that particular record. The link above can be copied into other pages, allowing you to initiate a search from as many places as you wish.

Some members have requested that certain information remain private. Such information is not displayed. RID members who wish to update their records should send an e-mail to membasst@rid.org.

Note: The online Membership Directories are updated approximately once per month.



[Search for an Interpreter Agency/Referral Service](#)

From here you can search our database for agencies by name, city, state, area code or zip code.

Note that the state should be in the form of the two-letter postal abbreviation. The first three digits of the zip code can be used with the state abbreviation to expand a zip code search or narrow a state search.

The results of your search will be returned as a list. From this list, you can click on a name to view details on that particular record. The link above can be copied into other pages, allowing you to initiate a search from as many places as you wish.

Agencies who wish to update their records should send an e-mail to membasst@rid.org.

Note: The online directories are updated approximately once per month. Only Interpreter Service Agencies that are members of RID are listed in the database.



Search the Workshop Database

This database contains information on various workshops from around the nation. It is primarily designed to enable interpreters and transliterators to locate RID Approved Workshops quickly and easily.

You can search our database for workshops by: (1) Course name, (2) Instructional Level, (3) Instructors' name (s), (4) State, or (5) Content area.

- Course name: topic or subject of the workshop
- Instructional level: PS (professional studies) or GS (general studies)
- Instructors' name(s): presenter(s) of the workshop
- State: pull down menu for the specific state of the workshop(s)
- Content area: pull down menu for Introductory or Intermediate or Advanced or Teaching

You can search for one specific workshop or search for various workshops. Once you do your search it will bring up the workshop or workshops that match the criteria you selected. Clicking on a particular workshop will bring up further information. That record will give you information on the dates, CEUs, and contact information for that workshop.

Note: The online Workshop Database is updated approximately once a month.

You may also want to go to our [Conferences](#) web page for further resources.



Search for Interpreter Training Programs

Welcome to RID's online Interpreter Training Program directory.

Search Instructions

You can search our database for interpreter training programs in the U.S. and Canada by program name, city, state, zip code, or area code. Note that the state should be in the form of the two-letter postal abbreviation. The first three digits of the zip code can be used with the state abbreviation to expand a zip code search or narrow a state search. The results of your search will be returned as a list. From this list, you can click on a name to view details on that particular record.

Three new features are coming soon. In the near future, you will be able to search degree type (Associate's, Bachelor's, etc.), as well as for programs with distance and/or web-based learning. Also, you will be able to click on the web address hyperlink and go directly to the program's web site.

To begin your search, click on [Search for Interpreter Training Programs](#).

This directory is offered as a community service. Programs come and go, and contact information changes frequently. RID gladly hosts this directory, yet assumes no responsibility for inaccuracies.

Coordinators/Directors To update your listing, please e-mail membpa@rid.org

PROSPECTIVE STUDENTS (and hopefully Interpreters-To-Be!!)

Whether they're called Interpreter Training Programs (ITPs), Interpreter Education Programs (IEPs), Interpreter Preparation Programs (IPPs), or something completely different or in-between, this directory features programs to get you started on your path to become interpreters. As each program is designed differently (entry requirements, degree plans, unique features, courses, etc.), you will need to contact those programs that interest you directly and find out about their specifics. Whether you are interested in taking just a few courses or completing an entire program, good luck in finding a training program!

Note: RID has no "authority" to evaluate, rank, rate, etc., these programs. To find the best program for you, ask about and research the following:

- campus environment and school's philosophy and mission
- degrees, certifications, credentials of instructors and professors
- success stories of recent graduates

SCHOLARSHIPS AND FINANCIAL AID

Except for RID's [Elizabeth Benson Scholarship Award](#), RID has no further resources. Ask the program for any possible resources, and contact the school's financial aid office.

For further information about the field of interpreting, please go here. "[How to become an Interpreter.](#)"

Note: The online Interpreter Training Program directory is updated approximately once a month.



Search for CMP/ACET Sponsors

Welcome to RID's online CMP/ACET Approved Sponsors directory.

This database is designed to enable interpreters and transliterators to locate RID CMP/ACET Approved Sponsors around the nation. From here you can search for sponsors by name, city, state, or if they process independent studies.

The result of your search will be returned as a list. From this list you can click on a name to view details on that particular record.



Welcome to RID's online transcript database. From here, Certified and ACET members can check their courses taken, cycle end date, or continuing education units (CEUs) accrued. This is a secure database that is password-protected for your privacy. **Your password is your RID member ID number.** It cannot be used as an official transcript - it's for online viewing only. To get an official transcript you need to contact the CMP Coordinator at cmp@rid.org.

The transcript will reflect the workshops, academic coursework, participant initiated non-RID activities (PINRA) or independent studies completed and approved by a CMP/ACET Approved Sponsor. Please note that upon completion of the activity, it can take up to sixty days for the event to appear on your online transcript. If it has been more than sixty days, please contact the Approving RID sponsor to inquire about the event missing. For sponsor contact information, please click [here](#).

Note: The online Transcript Directory is for online viewing only and is updated approximately once per month.

Search for CMP/ACET Transcripts -- RID Certified

Search for CMP/ACET Transcripts -- NAD Certified